

GAS LEAK DETECTOR FOR LPG/CNG

Instruction Manual

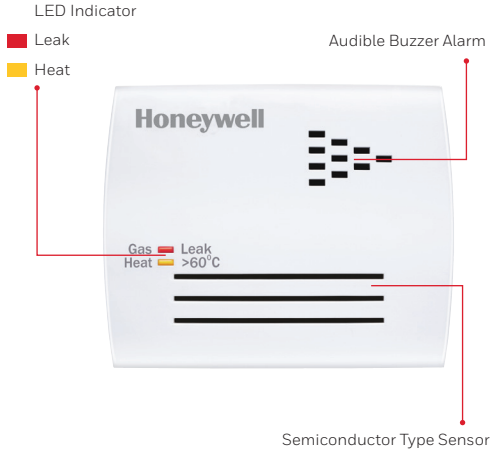
OVERVIEW

Honeywell Gas leak detector is an early warning detection device for LPG or CNG gas leakage from cylinders or through pipelines. Gas detection is done by diffusion.

Sensitive nose can sense the smell at much lower ppm level of gas which could be as low as 500ppm. LPG detector is calibrated to give alarm at about 2,000ppm to avoid unnecessary false alarms. This level is sufficient for early warning because LPG becomes explosive only after 20,000ppm which is 10 times the concentration at which the detector sounds an alarm.

This wall mount unit is compact and designed for low domestic as well as commercial applications such as hotel kitchens.

SALIENT FEATURES



1. Detects gases - LPG, CNG, Natural gas.
2. Gas is detected when LPG concentration exceeds about 10%-15% of LEL (2,000-3,000ppm) in the given volume. LEL for LPG is 20,000ppm.
3. Potential free relay contacts for alarm output.
4. Semiconductor type sensor.

TECHNICAL SPECIFICATIONS

Power Supply	230V, AC 50Hz
Power Consumption	4W
LED Indication	Gas Leak & Heat Detection Gas: Red LED Heat: Yellow LED
Alarm Type	Audible buzzer alarm
Output	PFC Relay O/P up to 2A contact rating
Dimensions	(111 x 90 x 40)mm (LxHxW)
Operating Temperature	-10°C to 70°C

INSTALLATION PROCEDURE

Pre-installation Checklist

Ensure that you have the following items with Honeywell Gas Leak Detector.

1. Unit with power cord
2. Test gas bottle (lighter)
3. User manual

Identifying Place for Gas Leak Detector in the premises

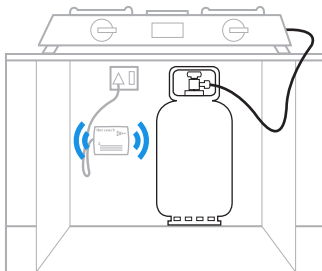


Fig. 1: For LPG Detection

Note: LPG is heavier than air. It has the tendency to settle down. Hence, when you are using LPG cylinder, the Gas Leak Detector must be installed at 30cm height above floor level.

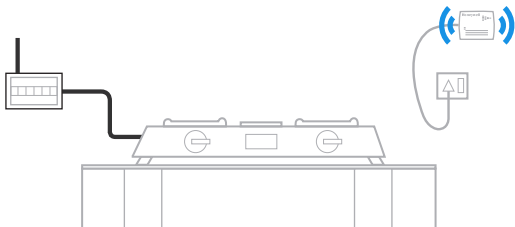


Fig. 2: For CNG/PNG Detection

Note: Natural gas (LNG/PNG/CNG) is lighter than air. Hence when you are using it, the Gas Leak Detector must be installed 30cm below the ceiling.

Locations to be avoided for installing Gas Leak Detector

1. Very near to exhaust fan
2. By the side of a door or window
3. Directly above the gas stove
4. Places where water can splash on to the unit
5. In an enclosed space: Many times, the LPG detector is mounted on the wall, behind the LPG cylinder, under the kitchen platform with the door without a grill. This creates a confined space around the detector, and cylinder, regulator and tube connecting it. In such cases, detector effectively detects LPG leaks occurring only in this confined space.

FIXING THE LPG DETECTOR

LPG Detector has unique enclosure design. After selecting the right location, fix the unit on the wall with the wall mounting plugs and screws provided with the unit. The unit can be installed as shown in Fig. 3. or Fig. 4.

1. It can be mounted on the front door of the kitchen cabinet of the LPG Cylinder. This will enable detection of gas leak from the cylinder as well as the gas stove. Refer to the following diagram (Fig. 3).

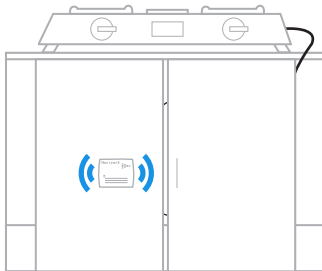


Fig. 3: Mounting Gas Leak Detector on the front door of kitchen cabinet

Note: If the LPG Detector is mounted on the door as shown above, power supply wire should be properly routed so that it does not get pinched in the hinges while closing the door.

2. If it is mounted behind the gas cylinder, the cabinet for the gas must have grills to detect gas leak from the gas stove also. Refer to the following diagram (Fig. 4).

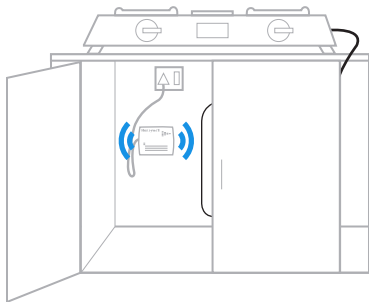


Fig. 4: Mounting Gas Leak Detector behind the gas cylinder

Note: When there is a leak from the gas stove because of a faulty connection to the tube or by leaving gas burner ON accidentally without a flame, the LPG may not reach the confined area near the cylinder where an LPG Detector and LPG sensor is installed. To avoid this, install the unit as shown in Fig. 3 or Fig. 4.

COLOR CODE FOR WIRE CONNECTIONS

Supply Voltage Connections

Supply Voltage	Wire Colour	Connection to
230VAC	2 pin plug with power cord	5A socket
+12VDC	DC power -ve	DC power +ve
Ground	Black wire	DC power -ve

Relay Connections

Relay Output	Wire Colour
NO	Yellow
NC	Blue
Common	Brown

OPERATION

Warm up period:

When LPG Detector is powered ON, it enters the warm-up period for approximately one minute. Gas Leak and Heat LED flash rapidly and simultaneously during the warm-up period.

Sense Mode:

Once the warm-up period is over, the detector enters into 'Sense' mode. During this mode, Gas Leak and Heat LED flash alternately.

During Sense mode, the LPG Detector measures the gas level in the environment and gives a visual indication. When a gas leak is detected at 10% LEL, the system gives visual indication and an audible alarm. The Gas Leak LED turns ON and an audible buzzer remains ON. Once the gas is dispersed, the alarms get reset.

During Sense mode, the LPG Detector measures the ambient temperature and gives a visual indication. When the temperature above 60°C is detected, Heat LED turns ON and an audible buzzer remains ON.

The relay output is used to trigger any external device such as a siren or a dialer. Relay operates in alarm state and resets when alarm stops.

Routine Check for LPG Detector

To ensure that the LPG Detector is in working condition, it is necessary to perform a regular check as to whether the Sensor ON LED is glowing.

For checking that the unit has not lost its sensing capability, it is necessary to check the unit once in a month, by applying gas from the test bottle.

DO'S & DON'TS - WHEN GAS LEAKAGE OCCURS

Do's:

1. If the gas leakage is severe, it is very dangerous for anybody to enter the premises. Call Fire brigade / Gas dealer.
2. If there is a minor / moderate gas leakage- Turn off the knob, regulator, to stop gas supply.
3. In case of complaints or concerns, get in touch with the customer support team & register a complaint. An MRA would be issued that could be used to return the product in case of a manufacturing defect.

Don'ts:

1. Do not panic.
2. Do not OFF / ON any electrical switch.
3. Do not light any kind of fire or lamp.

Disclaimer for Honeywell Gas Leak Detector

All statements, technical information and recommendations contained herein are based on available scientific and technical know-how, which we believe are true and reliable. However, neither the manufacturer nor the seller shall be liable for any loss, injury, earth, damage direct or consequential arising out of the use of or the inability to use the product. The purchaser and/or user shall determine the suitability of the product for his intended use and user assumes all risk and liability, whatsoever, in connection therewith. No statement or recommendation contained herein shall have force or effect unless in an agreement signed by officers of manufacturer or seller. Seller's and manufacturer's only obligation shall be limited to replace the product which is proved to be having manufacturing defect and returned within the warranty period.

TERMS OF WARRANTY

1. All models of Honeywell Gas Leak Detector are warranted against any manufacturing defects for a period of Twelve months from the date of purchase. The company shall repair/replace only the part or a part which proves to be defective due to faulty material or workmanship.
2. The warranty extended herein is confined only to the extent of repair/ replacement of defective parts and does not cover any consequential or resulting liability, damage or loss arising due to such defects. Furthermore, the warranty, in no case, shall extend to any monetary consideration whatsoever.
3. The cost of to & fro transportation of the Honeywell Gas Leak Detector to the nearest service center will be borne by the purchaser.
4. The warranty will be void if: a) The damage is caused by accident, flood, fire, misuse, negligence or erratic voltage fluctuation. b) If service or repair has been attempted by persons not authorized by the company. c) The company copy of warranty card is not sent to the company within Fifteen Days of purchase.
5. All disputes are subject to the jurisdiction of courts in Pune only.

Clean Rooms | Pharma | Hospital | HVAC | BulkDrugs | Chemicals | Heavy Machinery
Hydraulics & Vacuum Industry | Green House | Server Room | Confined Space | Cold Storage

Instrukart Holdings

India Toll Free : 1800-121-0506 | Ph : +91 (40)40262020

Mob +91 7331110506 | Email : info@instrukart.com

#18,Street-1A, Czech Colony, Sanath Nagar, Hyderabad -500018, INDIA.



INSTRUKART

YOUR WORLDWIDE INSTRUMENT PARTNER