



G7c

THE WORLD'S HARDEST-WORKING CONNECTED MONITOR.

Blackline Safety's G7c leverages integrated 3G-cellular connectivity to wirelessly link your team to real people, while automating data analytics and compliance reporting. Should a gas leak, injury or health event occur, G7c confidently accounts for everyone's well-being and whereabouts in real-time, so no call for help ever goes unanswered.

G7c automatically watches over employees and lone workers. All safety incidents are communicated to live monitoring personnel who can mobilize responders to an employee's exact location or trigger an evacuation in real-time. With a two-way speakerphone, monitoring personnel can communicate directly with the worker, providing critical insights and situational awareness for optimized emergency responses.

G7c delivers an exclusive customizable modular design, delivering the ability to expand functionality with a range of plug-and-play cartridges and a range of gas sensors. Choose from a Standard, Single-gas, Multi-gas diffusion or Multi-gas pump cartridge to address the needs of your work environment — everything is completely configurable to meet the needs of every industry, application and scenario.

G7c devices collect more data than ever before, automatically streaming it to the Blackline Safety Network when in areas of cellular coverage. All event and alert data is time and location-stamped, powering our Blackline Analytics reporting platform. Bump test and calibration data is also communicated seamlessly, for live compliance visibility and reporting. Teams can easily analyze their data without ever having to manually collect and compile anything. G7c does it all, so you don't have to.

Features



Fall detection



No-motion detection



Two-way voice and text messaging



Push-to-talk



SOS alert



Check-in



Assisted-GPS



Indoor location technology



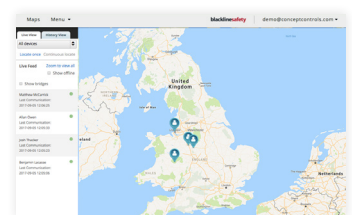
Gas alarms



Configuration modes



Blackline Analytics reporting platform



Blackline Live safety monitoring portal

DETAILED SPECIFICATION

Standard G7 safety features

Fall detection and No-motion detection: Tri-axis accelerometer, tri-axis gyro, software processing, configurable sensitivity, configurable time for no-motion
SOS latch: Pull latch to trigger SOS alert
Silent SOS: Press and hold latch to trigger SOS alert
Low-battery: Configurable threshold
Worker check-in: Configurable timer (30 – 180 min, or off), automatic check-in when driving

Additional gas cartridge features

Under limit
 Over limit
 Time-weighted average (TWA)
 Short-term exposure limit (STEL)
 High gas alert
 Low gas alert
 Bump test and calibration notification
 Bump test and calibration failure

Size & weight

G7 with Standard Cartridge
 Size: 64 mm x 124 mm x 27 mm (2.5" x 4.9" x 1.1")
 Weight: 162 g (5.7 oz)
G7 with Single-gas Cartridge
 Size: 64 mm x 128 mm x 27 mm (2.5" x 5.0" x 1.1")
 Weight: 167 g (5.9 oz)
G7 with Multi-gas diffusion Cartridge
 Size: 66 mm x 150 mm x 27 mm (2.5" x 5.9" x 1.1")
 Weight: 192 g (6.8 oz)
G7 with Multi-gas pump Cartridge
 Size: 66 mm x 151 mm x 38.5 mm (2.6" x 5.95" x 1.52")
 Weight: 238 g (8.4 oz)

User interface

168 by 144 pixel graphical, high contrast, liquid crystal display with front lighting, menu system driven by three-button keypad, power button (on/off), check-in button (check-in/silent SOS), SOS latch (send emergency alert)
Multi-language support: Yes, EN, FR, ES, DE, IT, NL, PT

User notification

Green SureSafe® light: Blinking (powered), continuous (connected)
Yellow top and front lights: Yellow pending alarm and yellow warning alarm
Red top and front lights: Red alert communicated
Blue LiveResponse™ top and front lights: Confirmation that a monitoring team has acknowledged the alert
Alarm Indicators: Speaker, LED lights and vibration motor
Speaker sound pressure level: ~95 dB @ 30 cm (~95 dB @ 11.8")
Voice calling: Speakerphone and phone modes (G7c model only)

G7c wireless radio

Wireless coverage: 100 countries, 200 wireless carriers
North America: 2G/3G radio, GSM 850 MHz, PCS 1900 MHz, 3G UMTS bands 2, 5 and 6
International: 2G/3G radio, E-GSM 900 MHz, DSC 1800 MHz, 3G UMTS bands 1 and 8
Antenna: Internal regionally optimized

Location technology

GPS Radio: 48-channel high sensitivity
Assisted-GPS: Yes (G7c model only)
GPS Accuracy: ~5 m (16 ft) Outdoors
Indoor location technology: Blackline Safety location beacons
Location update frequency: G7c 5 min, G7x 15 min defaults

Power & battery

Rechargeable Li-ion battery: 1100 mAh Li-ion
Battery Life: 18 hours at 20°C (68°F) under normal usage
Charging time: 4 hours

Environmental

Storage temperature: -30°C to 60°C (-22°F to 140°F)
Operating temperature: -20°C to 55°C (-4°F to 131°F)
Charging temperature: 0°C to 45°C (32°F to 113°F)
Ingress Protection: Designed to meet IP67

Approvals

G7c: SAR, RoHS, CE, RCM
Unit ID: 3567xxxxxx
FCC ID: W77G7C **IC:** 8255A-G7C
 Contains FCC ID: XPY1CGM5NNN, IC: 8595A-1CGM5NNN
or
Unit ID: 3566xxxxxx
 Contains FCC ID: XPY1CGM5NNN, IC: 8595A-1CGM5NNN
Canada & USA: Class I Division 1 Group A,B,C,D T4; Class I Zone 0 AEx da ia IIC T4; Ex da ia IIC T4 Ga 
IECEX: Ex da ia IIC T4 Ga
ATEX: Ex da ia IIC T4 Ga  

LEL: CSA C22.2 No.152; ISA 12.13.01
LEL Pump Cartridge: CSA C22.2 No.152; 0°C ≤ Ta ≤ 40°C; ANSI/ISA-12.13.01; -10°C ≤ Ta ≤ 40°C

Warranty

G7: two years limited warranty
Cartridges: lifetime with service plan
Blackline Complete: three year operating lease with three year warranty

Blackline Live web application

Cloud-hosted safety monitoring web application is highly customizable for every customer requirement. Includes live map, employee address book, user roles, alert management, device configurations, alert setups and reporting.

Gas sensors

Gas	Sensor type	Range	Resolution
Ammonia (NH ₃)	Electrochemical	0–100 ppm	0.1 ppm
High-range ammonia (NH ₃)	Electrochemical	0–500 ppm	1 ppm
Carbon monoxide (CO)	Electrochemical	0–500 ppm	1 ppm
High-range carbon monoxide (CO)	Electrochemical	0–2000 ppm	5 ppm
Hydrogen resistant carbon monoxide (CO-H)	Electrochemical	0–500 ppm	1 ppm
Carbon dioxide (CO ₂)	NDIR	0–50,000 ppm	50 ppm
Chlorine (Cl ₂)	Electrochemical	0–20 ppm	0.1 ppm
Chlorine dioxide (ClO ₂)	Electrochemical	0–2 ppm	0.01 ppm
COSH	Electrochemical	0–500 ppm CO, 0–100 ppm H ₂ S	1 ppm CO, 0.1 ppm H ₂ S
Hydrogen cyanide (HCN)	Electrochemical	0–30 ppm	0.1 ppm
Hydrogen sulfide (H ₂ S)	Electrochemical	0–100 ppm	0.1 ppm
High-range hydrogen sulfide (H ₂ S)	Electrochemical	0–500 ppm	0.5 ppm
LEL-infrared (LEL-IR)	NDIR	0–100% LEL	1% LEL
Oxygen (O ₂)	Pumped electrochemical	0–25% vol	0.1% vol
Ozone (O ₃)	Electrochemical	0–1 ppm	0.01 ppm
Photoionization (PID)	PID	0–6,000 ppm	0.1 ppm (0–100 ppm), 2 ppm (100–6,000 ppm)
Sulfur dioxide (SO ₂)	Electrochemical	0–100 ppm	0.1 ppm

Clean Rooms | Pharma | Hospital | HVAC | BulkDrugs | Chemicals | Heavy Machinery
 Hydraulics & Vacuum Industry | Green House | Server Room | Confined Space | Cold Storage

Instrukart Holdings

India Toll Free : 1800-121-0506 | Ph : +91 (40)40262020

Mob +91 7331110506 | Email : info@instrukart.com

#18, Street-1A, Czech Colony, Sanath Nagar, Hyderabad -500018, INDIA.

