

RADIATION SURVEY METER FOR ALPHA, BETA, GAMMA & X-RAYS

MEASURE RADIOACTIVITY EASILY AND RELIABLY



This professional radioactivity meter is a precise instrument to measure Alpha, Beta and Gamma & X-Ray radioactivity.

The radioactivity meter has a wide calibrated measuring range of 0.01µSv/hr to 1000 µSv/hr having capability to read up to 1800 µSv/hr and can be used for diverse fields like used for Residual radioactivity checking in scrap metal and final components in foundries, Steel Plants, Scrap Plants and NDT testing laboratories, Pre-Shipment Inspection of Export Consignments, Inspection of Imports for any radioactive material, Background environmental radiation checking in hospitals having cancer departments, Environmental Research Institutes, Environmental Studies departments in Universities, Embassy Security, Security forces.

The radioactivity meter provides a certified measurement of the environmental radiation. This radioactivity meter has diverse applications. This Geiger meter is usually used in nuclear power stations. It is most commonly used in the control of imported goods, as well as to measure food which has been previously irradiated. This radioactivity meter can also be used to measure natural radioactive radiation such as the radiation which appears near the sea. It fulfills all the requirements when controlling building materials and controlling scrap material at steel plants and foundries.

Technical Specifications	
Display	Liquid Crystal Display (LCD), 4 digit, numeric with dimension, quasi-analog logarithmic with bar chart, operating mode indicators.
Measuring Principle/ Radiation Detector	Geiger -Muller Counting Tube, Auto Shut-off, Stainless Steel Case with Halogen Filler
	- Measurement Length = 38.1mm
	- Measurement Diameter = 9.1mm
	-Window = 1.5 - 2.5 mg/m ²
Radiation Type	- Alpha Radiation from 4 MeV
	- Beta Radiation from 0.2 MeV
	- Gamma Radiation from 30 KeV
Radiation Selection	Alpha + Beta + Gamma (Without Shielding)
	Beta + Gamma - Al Foil Approx. 0.1mm shields off alpha radiation completely.
	Gamma - Al Foil Shielding approx. 3mm, Shielding off Alpha Radiation completely and Beta radiation to 2 Mev, Weakens Gamma less than 7% based on Cs-137.
Gamma Sensitivity	95.0 Impulses/min for radioisotope Co60
Null Quota	< 10 Impulses/minute
Calibrated Measurement Ranges	0.01 µSv / h - 1,000 µSv / h
Measurement of the Impulses	1-99sec, 1-99minutes, 1-99hours Mean value of the day (24hours - 12am to 12am)
Internal saving of Impulses in Memory	Intervals to be selected by user. Can select every 1 minute, 10 minute, 1 hour, 1 day, 7 days
Memory	2 KB
Software & data Cable	Included in Delivery
Power for Instrument	Internal Battery
Battery Life	under 10 microamp on average > 1,17,000 hours X 20 impulses/ minute (approx. 10 years)
Housing of the Instrument	Impact Resistant Plastic
Dimensions	163mm (L) X 72mm (W) X 30mm (h)
Weight	153 gms
Certification	With Delivery every instruments is certified as per its serial number.
Certification	European Standard CE/ USA Standard FCC15

Performance

Functions and Features (all models)

- **Large range of Calibration:**
In measuring mode, the display shows the current radiation measurement reading. The display also temporarily shows the average H of the last day (24h, 12 am to 12 am).
- **Large Scale:**
GAMMA-SCOUT® is calibrated across a wide scale (0.01 up to 1000.00 µSv/h).
- **Tested Calibration:**
Each GAMMA-SCOUT® radiation meter is subjected to a final test. This test is supervised by the Institute of Radiation Protection; a government controlled university for Applied Technology in Germany. The tested device must be 95% similarity in measurements to a master. This master is adjusted to a gauged reference Cs-137 emitter.
- **Reference Isotope Not Equal to Cs-137:**
The conversion from impulses per time into the dose rate is based on Cs-137. If other isotopes are present, the impulses per time can be directly displayed, and can be converted by using personal charts.
- **Dose Rate and Dose:**
GAMMA-SCOUT® can be used as a dose meter (cumulative radiation).
- **Change Sievert to Rem:**
The dose rate may be displayed in Sievert or Rem.
- **Energy-Saving Permanent Operation:**
The GAMMA-SCOUT® monitors radiation day and night and logs data for later download. Due to sophisticated electronics, its battery lasts for years. The model "RECHARGEABLE" works with a rechargeable battery.
- **Data Storage:**
GAMMA-SCOUT® stores all registered pulses in its internal memory and keeps them ready for you to use when desired. 32,000 Readings: For constant monitoring of the environmental data, the interval of data storage is set on a value of one per week. This equals 600 years of memory capacity. The user can set up smaller intervals, which maxes out the memory capacity sooner. One can clear the memory content manually.
- **Certification:**
GAMMA-SCOUT® meets all European CE standards as well as the "FCC 15 standard" of the USA. GAMMA-SCOUT® may be carried on aircraft.

GAMMA-SCOUT® Basic Version (without alert and ticker)

- GAMMA-SCOUT® Basic Version is a Standard model with normal battery and without any alert & ticker

GAMMA-SCOUT® w/alert (basic functions plus alert and ticker)

- **Threshold for Dose Rate:**
This model features an acoustic alert when radiation level exceeds a user programmed threshold..
- **Threshold for (cumulative) Dose:**
GAMMA-SCOUT® w/ALERT offers an acoustic alarm when a user programmed threshold for the cumulative dose is exceeded.
- **Ticker:**
The user can set an acoustical ticker which activates with each gamma pulse detected.

To save battery resources, the signal shuts down after ten minutes and must be restarted.
On devices with rechargeable batteries, the ticker will not shut down.

GAMMA-SCOUT® ONLINE / REAL TIME (with the functions of the Alert-model)

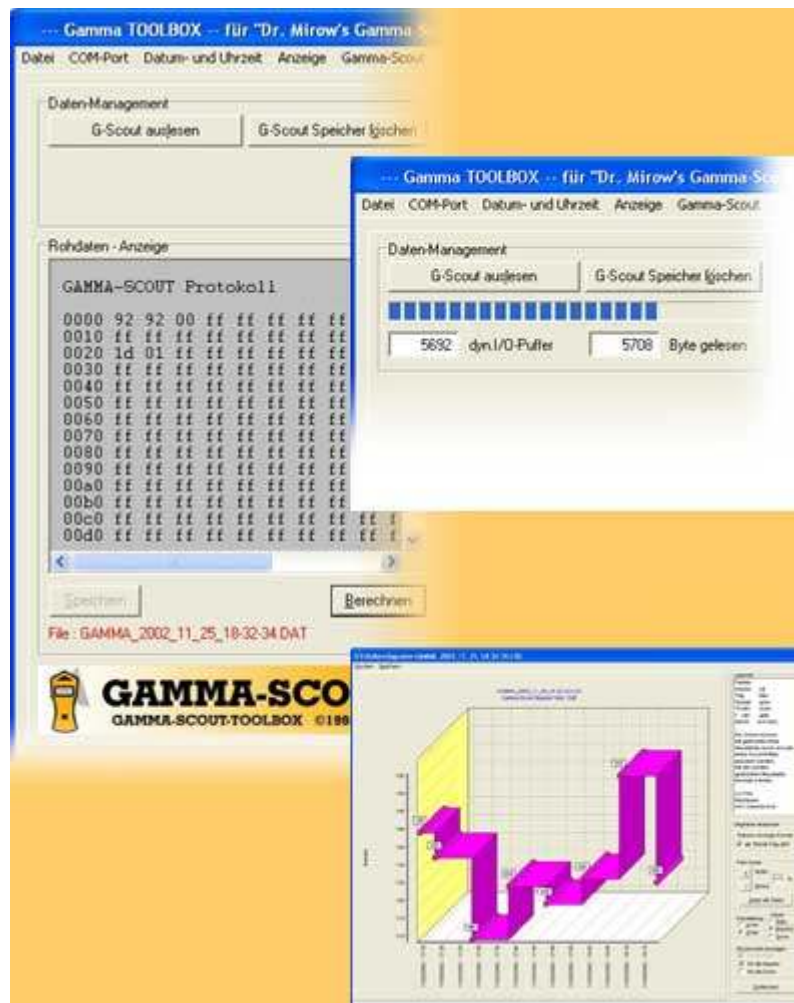
- **Used in Measurement Stations:**
GAMMA-SCOUT® sends measured impulses in a 2 second interval (synchronized with the measurement) via USB-Port to a connected PC.

GAMMA-SCOUT® RECHARGEABLE (with the functions of the Alert-model)

- **Rechargeable:** power supply, charged via USB (power supply unit or PC).

Software

The software is used to transfer radiation values which are recorded in the meter to a PC/ computer. Measuring data can also be transferred to other calculation programs such as Excel sheet to be valued. Software program can be downloaded thru CD which is included in Delivery. Software can be run on Windows 7 Programme.



Temp | Humidity | Pressure | Vacuum | Data Loggers | Calibrators | Gas Detectors | Pharma / HVAC Solutions | Projects

Instrukart Holdings

India Toll Free : 1800-121-0506 | Ph : +91(40)40262020 | Mob : +91 8886550506

Email : cs@instrukart.com | Web : www.instrukart.com

#18, Street-1A, Czech Colony, Sanath Nagar, Hyderabad-500018, INDIA.

<https://www.youtube.com/instrukartholdings>



INSTRUKART

YOUR WORLDWIDE INSTRUMENT PARTNER