

Temtop

P10/M10/M10i

Factors Affecting Air Quality

PM2.5 (Particulate Matter 2.5) refers to fine particles with diameter of 2.5 micrometers or less. Due to its tiny size, PM2.5 can be absorbed into bloodstream and the lungs, which may cause eye and nose irritation, cough, asthma, emphysema, lung disease, heart attacks, cancer and etc.

Formaldehyde (HCHO) is a colorless and strong-smelling gas with formula CH₂O, which has been classified by IARC as Group 1 carcinogen. Long-term exposure to just low doses could cause chronic respiratory diseases, nasopharyngeal carcinoma, colon cancer, brain tumors, nuclear gene mutation and etc.

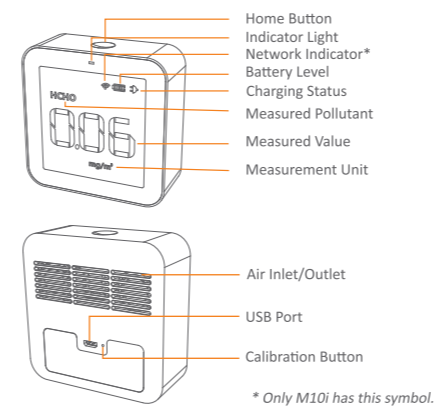
TVOC (Total Volatile Organic Compounds) refers to various common VOCs including benzene, toluene, styrene, formaldehyde and etc. Due to their volatility as well as toxicity, irritability and carcinogenicity, long-term exposure to TVOCs can cause damage to the skin, liver, kidneys, central nervous system and etc.

AQI (Air Quality Index) is a quick guide showing how clean or polluted the air is, using a range from 0 to 500, where higher index values indicate higher levels of air pollution and higher risks to health. There are six pollutants for AQI in US standard: PM2.5/10, O₃, SO₂, NO₂, CO, where Temtop only focus on PM2.5/10 and follows the US EPA Standards to compute AQI.

Warnings!

- ★ Do not place the detector in heavily polluted environment for a long time. Otherwise, the sensor may be damaged and cannot run normally.
- ★ Do not use the detector in humid environment in order to maintain the detection accuracy.
- ★ Do not cover the air inlet/outlet while in use. Do not let fluff or hair entering the detector.
- ★ Try to avoid using the product in the environment with strong odour or pungent smell.

Product Overview



Functions

Function	Model	P10	M10	M10i
PM2.5		✓	✓	✓
AQI*		✓	✓	✓
HCHO			✓	✓
TVOC			✓	✓
Wi-Fi				✓

* Following the US EPA Standards for Particle Pollution to calculate AQI.

Specifications

Model: P10/M10/M10i	PM2.5
Battery capacity: 2200mAh	Sensor: Laser PM sensor
Battery life: Approx. 6 hours on a single charge	Measuring range: 0-999µg/m ³
Input: DC 5V; 0.5A-1A	Resolution: 1µg/m ³
Operating environment: 0-50°C; 0-90%RH	Accuracy: ±10µg/m ³ (0-100µg/m ³); ±10%µg/m ³ (100-500µg/m ³)
Dimensions: 82x82x31 mm	HCHO*
3.2x3.2x1.2 in.	Sensor: Electrochemical sensor
Weight: 200g	Measuring range: 0-2mg/m ³
TVOC Measuring range*: 0-5mg/m ³	Resolution: 0.01mg/m ³
TVOC Resolution: 0.01mg/m ³	Accuracy: ±0.03mg/m ³ (0-0.3mg/m ³); ±10%mg/m ³ (0.3-2mg/m ³)

* The function is for M10/M10i only.

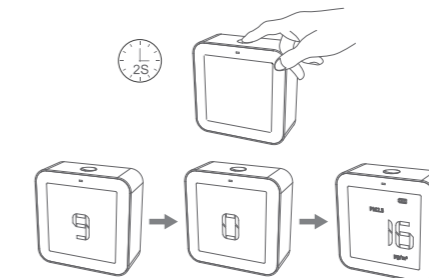
Operations

Before you begin

Unpack and take out the detector. Place it outdoors for more than 6 hours for calibrations.

1. Turn On/Off

Press and hold Home button for 2 seconds to turn on/off the detector. After turn on, please wait for the countdowns.



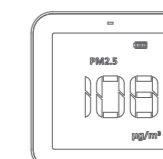
2. Display

1. M10/M10i Model

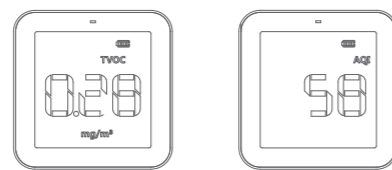
HCHO concentration will auto display after the countdowns:



Then press Home Button to display PM2.5 concentration:



Then press Home Button to display TVOC concentration;
Then press Home Button again to display AQI index:



Other Operations

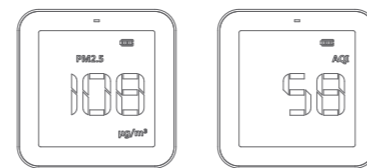
Manual Loop: Repeat above steps can manually loop the display in order of HCHO, PM2.5, TVOC, AQI.

Auto Loop: Double press Home Button can auto loop each display every 3s. Double press again to exit Auto Loop mode.

Note: For further Wi-Fi connecting Instructions to M10i model, please refers to another manual that comes along: "M10i Add Device and Connect Wi-Fi".

2. P10 Model

PM2.5 concentration will auto display after turn on countdowns;
Then press Home Button to display AQI index:



Other Operations

Manual Loop: Repeat above steps can manually loop and display the PM2.5, AQI.

Auto Loop: Double press Home Button can auto loop each display every 3s. Double press again to exit Auto Loop mode.

3. Indicator Lights

The indicator lights on the panel indicate the corresponding air quality:

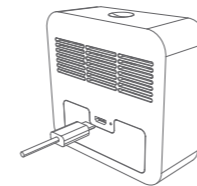
Status	Good	Fair	Poor
Color	Green	Yellow	Red

The battery level indicator on the screen indicates the device charging status:

Status	Charging	Full
Color	Yellow	Green

4. Charging

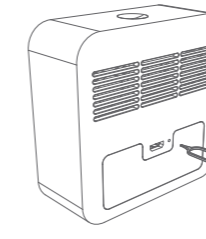
When battery level is low, please charge by connecting it with the USB cable and power supply.



5. HCHO Calibration*

It is suggested to calibrate the detector after 3 months usages. The calibration instructions are showing below:

- Turn on the detector and wait for about 10 minutes.
- Use the pin tool to press the calibration button for more than 10 seconds until HCHO icon blinks on the screen.
- Place the detector outside for 10 minutes for ventilation.
- When HCHO icon does not blink, it indicates that the calibration has finished.



* Calibration is only for M10/M10i.

Air Quality Parameter for Reference

Status	Good	Fair	Poor
PM2.5 (µg/m ³)	≤12	12.1~55.4	≥55.5
AQI*	≤50	51~150	≥151

* Following the EPA Standards for Particle Pollution to calculate AQI for PM2.5.

Status	Healthy	Unhealthy
TVOC (mg/m ³)	≤0.5	>0.5
HCHO (mg/m ³)	≤0.1	>0.1

What's Included

Air Quality Detector	x 1
P10/M10/M10i Manual	x 1
USB Cable	x 1
Pin Tool*	x 1
M10i Add Device and Connect Wi-Fi Manual**	x 1

* Only included for M10 and M10i
** Only included for M10i

Elitech Technology, Inc.
1551 McCarthy Blvd, Suite 112,
Milpitas, CA 95035 USA
(+1)408-844-4070
sales@temtopus.com
www.temtopus.com
Made in China