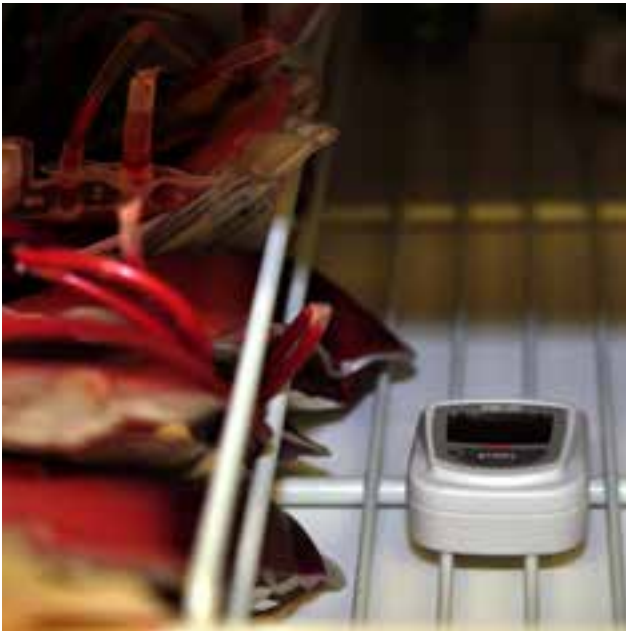


EBI 20 Standard Data Loggers

With a memory capacity of 40,000 measurements the easy to use EBI 20 data loggers are suitable for the continuous documentation and monitoring of temperature and humidity. All EBI 20 data loggers are delivered with a factory calibration certificate and a user replaceable battery. The data loggers are particularly attractive because of their excellent price-performance ratio.

Applications:

- Transport monitoring
- Storage monitoring
- Process monitoring





General technical specifications: valid for all types*

Resolution: Temperature	0.1 °C (0.2 °F)
Resolution: Humidity (only humidity data loggers)	0.1 % rH
Measurement mode	<ul style="list-style-type: none"> • Endless measurement • Start immediately until end of memory • Start / stop measurement • Start with key press
Operating temperature	-30 ... +60°C (-22 °F ... +140°F)
Storage temperature	-40 ... +70°C (-40 °F ... +158 °F)
Battery	3 V lithium (CR2450), user replaceable
Battery lifetime	Up to 24 months, at a sampling rate of 15 min. at +25 °C (77 °F)
Housing material	ABS
Dimensions (L x W x H)	69 x 48 x 22 mm**
Weight	Approximately 45 g**
Certificate	Factory calibration certificate

* Please find the exact technical data of each EBI 20 logger type on the next pages.

** Dimensions and weight just refer to the EBI 20 housing.

EBI 20-T1 Standard Temperature Data Logger with internal temperature sensor



Technical Data

Measurement range	-30 °C ... +70°C (-22 °F ... +158 °F) (please see the note on the next page)
Accuracy	±0.5 °C (-20 °C ... +40 °C) / ±0.9 °F (-4 °F ... 104 °F) ±0.8 °C (±1.4 °F) for the remaining measurement range
Data memory	1 channel, 40,000 measurements
Sensor	NTC
Sampling rate	1 min to 24 hours
Protection class	IP 67

Type	Description	Part No.
EBI 20 T1	Temperature logger	1601-0042

EBI 20-TE1 Standard Temperature Data Logger with external probe



Technical Data

Measurement range	-30 °C ... +70°C (-22 °F ... +158 °F) (please see the note on the next page)
Accuracy	±0.5 °C at -20 °C ... +40 °C (±0.9 °F at -4 °F ... 104 °F) ±0.8 °C (±1.4 °F) for the remaining measurement range
Data memory	1 channel, 40,000 measurements
Sensor	NTC, 55 mm, Ø 3 mm, pointed
Sampling rate	1 min to 24 h
Cable	Silicone, L = 0.8 m
Protection class	IP 67

Type	Description	Part No.
EBI 20-TE1	Temperature logger with external probe	1601-0043

EBI 20-TF Standard Temperature Data Logger with external probe up to +100 °C (+212 °F)



Technical Data

Measurement range	0 °C ... +100 °C (+32 °F ... +212 °F)
Accuracy	±0.5 °C (+50 °C ... +100 °C) ±1 °C for the remaining measurement range
Data memory	1 channel, 8000 measurements
Sensor	NTC, 55 mm, Ø 3 mm, pointed
Sampling rate	Adjustable from 1 sec to 24 hours
Cable	Silicone, L = 0.8 m
Protection class	IP 67

Type	Description	Part No.
EBI 20-TF	Temperature data logger with external probe	1601-0010

EBI 20-TH1 Standard Temperature / Humidity Data Logger with internal humidity sensor



Technical Data

Measurement range: humidity	0 % rH ... 100 % rH
Accuracy: humidity	±3% rH (10% rH ... 90% rH)
Measurement range: temperature	-30 °C ... +70°C (-22 °F ... +158 °F) (please see the note below)
Accuracy: temperature	±0.5 °C at -20 °C ... +40 °C (±0.9 °F at -4 °F ... 104 °F) ±0.8 °C (±1.4 °F) for the remaining measurement range
Data memory	40,000 measurements
Channels	channel 1: relative humidity, channel 2: temperature
Sensor	NTC, capacitive humidity sensor
Sampling rate	1min ... 24h
Protection class	IP 52

Type	Description	Part No.
EBI 20-TH1	Temperature/Humidity Data Logger	1601-0044

Sets and Accessories for EBI 20



EBI 20-T1-Set Temperature logger set (temperature logger, evaluation software, interface)



EBI 20-TE1-Set Temperature logger set (logger with external probe, evaluation software, interface)



EBI 20-TF-Set Temperature logger set (logger with external probe up to +100 °C (+212 °F), evaluation software, interface)



EBI 20-TH1-Set Temperature Humidity Logger Set (Logger, Evaluation software, Interface)



EBI 20-IF Interface



EBI 20-WM wall bracket



EBI 20-WM-1 truck wall bracket



The temperature measurement range of some EBI 20 models has been increased from +60 °C to +70 °C. This may require an update of the Winlog software.

Type	Description	Part No.
EBI 20-T1-Set	Temperature logger set (temperature logger, evaluation software, interface)	1601-0046
EBI 20-TE1-Set	Temperature logger set (logger with external probe, evaluation software, interface)	1601-0047
EBI 20-TF-Set	Temperature logger set (logger with external probe up to +100 °C (+212 °F), evaluation software, interface)	1601-0011
EBI 20-TH1-Set	Temperature Humidity Logger Set (logger, evaluation software, interface)	1601-0048
EBI 20-IF	Interface for EBI 20	1601-0020
EBI 20-WM	EBI 20 wall bracket with padlock	1601-0030
EBI 20-WM-1	EBI 20 truck wall bracket	1601-0033